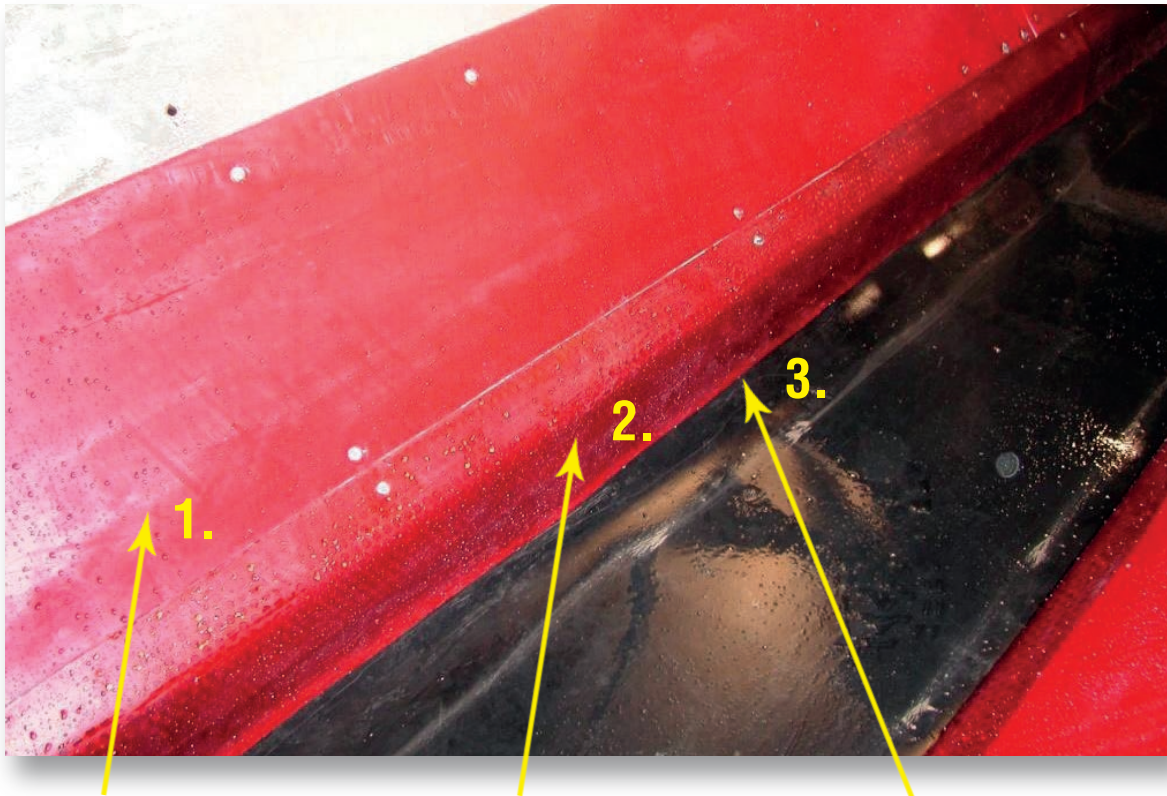


MATERIAL DIRECTIONAL ELEMENTS

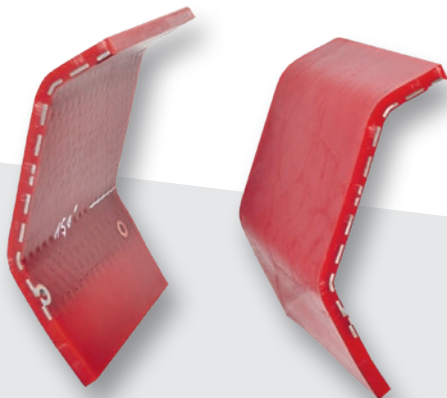
for conveyors



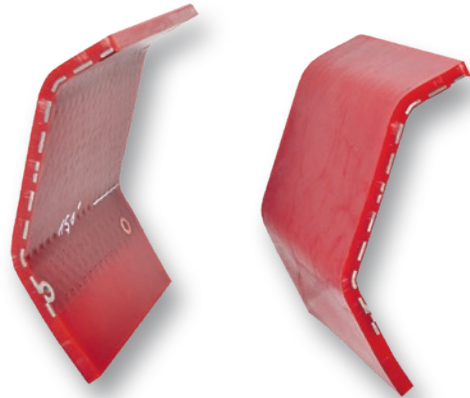
1.
PUCEST wear plates
in 55°-90° shore hardness
(material flow)

2.
PUCEST wear plates with
cast-in metal reinforcement
for fastening (adjusting)

3.
Adherent PUCEST wear
streamlining without metal
insert for the protection of
the lining of the conveyor
belt



PUCEST MATERIAL DIRECTIONAL ELEMENTS FOR CONVEYORS



The PUCEST material directional elements for conveyors protect the cornering of the tapes and ensure a steady flow of material.



It is a combination of PUCEST sheets with and without a perforated plate. Perforated plates are used for attachment and stabilization. The pure PU-part has through its tension a light contact with the conveyor belt and it is self-adjusting, so that no material falls down to the left and to the right. The wear protection can be combined together with other PUCEST panels with any height and length

EXAMPLE OF USE

