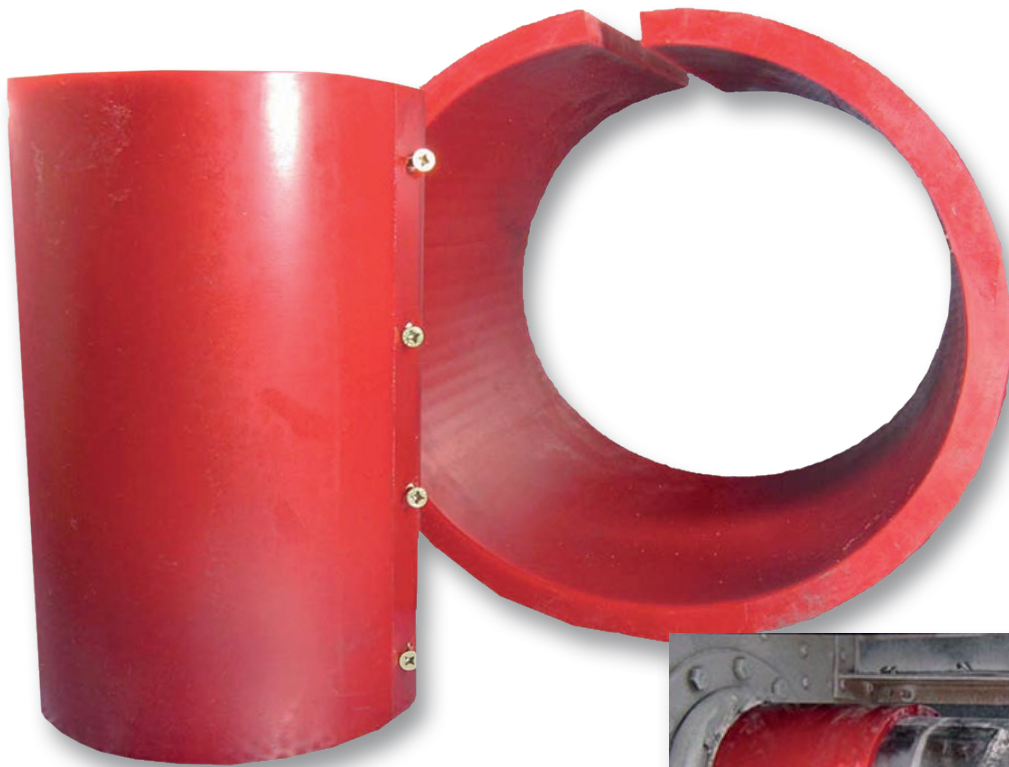


# SHAFT AND TRAVERSE SAVER



- perfect protection for your shaft
- very wear resistant because of it is made of PUCEST
- easy and quick installation using Spax fixing, no long hours of the ground preparation are necessary
- almost all lengths and diameters are available



Protective pipe of the eccentric and the traverse inside of separating plant is subject to substantial wear and its working durability is often predictable. The replacement or repair of these protective pipes is often very complex and that's why it can raise significant costs and production downtimes.

Also covering / pasting with anti-wear rubber mats or something like this is very expensive and cumbersome, since considerable expenses incur when pipe cleaning before pasting. Furthermore, the surface in case of exchange is also removed very tedious.

The new PUCEST shaft savers are not subject to this laborious installation. The savers are twisted round the cleaned axle or pipe and they are fixed using screws attached to the savers. Savers manufactured of PUCEST 85 are extremely wear resistant and they are very easy to install and very user friendly. The savers are delivered in almost any diameter and thickness.

