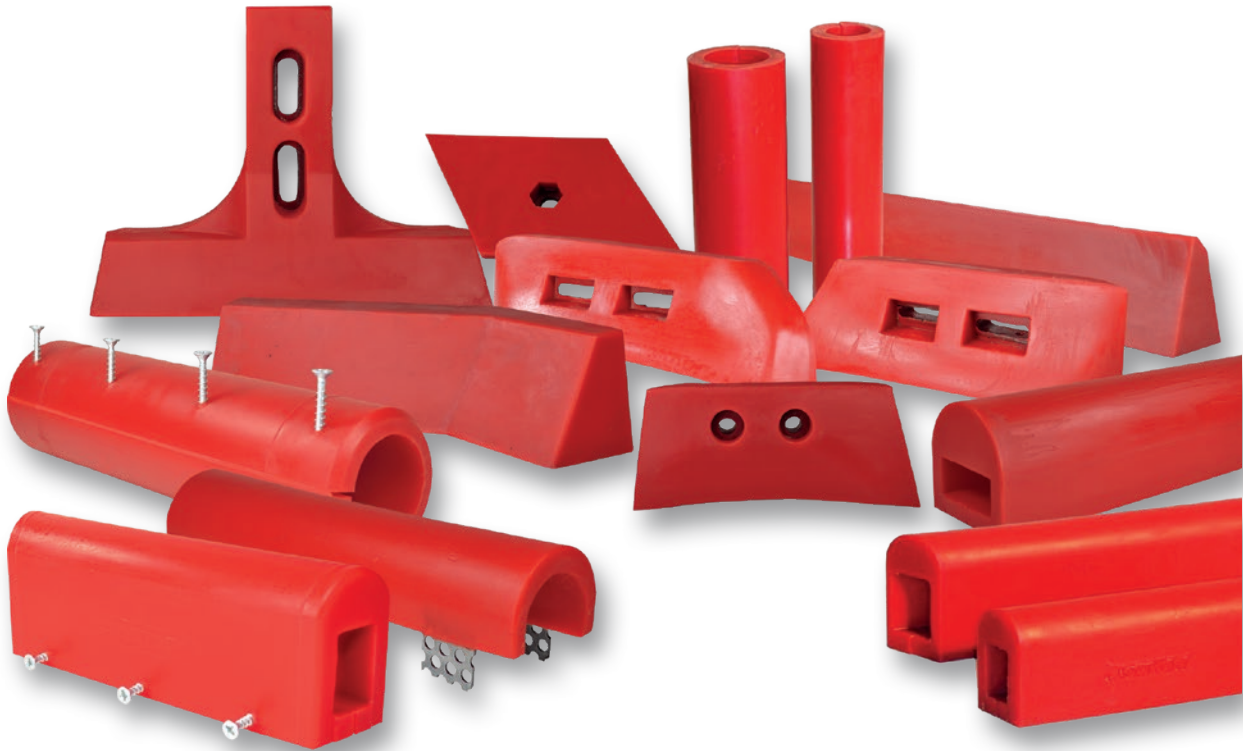


MIXING TOOLS



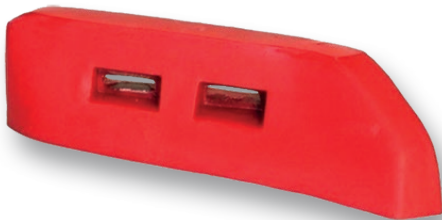
PUCEST mixing tools are available in the form of shovels, arm protectors, clearing capacity and scrapers for each type of mixer.

All PUCEST mixing tools convince users thanks to its extremely high wear resistance and above-average service life.

Another advantage of PUCEST-mixing tools is in their specific elasticity: mixer bases and housings are protected when using of PUCEST - mixing tools, since the material is optimally adapted to the surface without scratching it.

PUCEST UNIVERSAL MIXING TOOLS

- Suitable for almost every plate mixer -



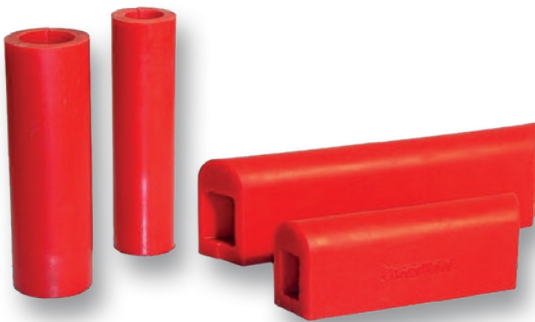
PUCEST mixing blade on the right



PUCEST mixing blade on the left



PUCEST universal inside cleaner including universal holder



PUCEST universal arm protective layer with spax screw fixing



PUCEST universal-clearing capacity, is used as an outside cleaner and / or bottom cleaner



PUCEST universal holding angel for mixing blades suitable for each plate mixer

PUCEST mixing tools of different plate mixer brands



PUCEST MIXING BLADE

Die PUCEST mixing blade is the absolute universal mixing blade because it works in almost every plate mixer.

The blade is available in left and right versions, thus it fits for left-or right-rotating mixers. It can be used by your design as internal or external blade. The blade has a solid milled steel core and that's why it has immense form stability. This leads to a high working stability.

The aerodynamic shape of the PUCEST blade helps that the mixture is mixed by furrowing, unlike by many other shovels when the mixture is just pushed in front of blade. Thanks to this blade form there is a material shifting and that's why the base and the walls are not crushed.

The blade fits e.g. to TEKA, Liebherr, Pemat, WEMA, Fejmert, Kniele mixers. It can be installed into any plate mixer using available optional holder.

The PUCEST mixing blade is the perfect addition to ceramic mixer base.



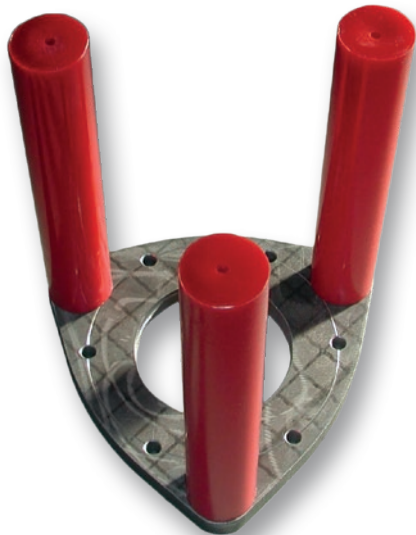
PUCEST mixing blade right version

PUCEST mixing blade left version



Mixing Instruments

PUCEST WHIRLER



Whirler – mixing instruments composed of three components:

1 x whirler plate (supplied with every mixer)

3 x whirler spindle (available in any length)

3 x whirler case (500 mm x 90 mm)



Due to wearing, separate purchasing of the whirler spindle or of the whirler case is possible.

APPLICATIONS



◀ It shouldn't go inside too far.

These whirler spindles were used for protection of hard metal plates. The plates in the mixer no longer corresponded to the demands for long-term operation and they peeled back. Thanks to the PUCEST components for the whirler instruments this might not have happened. This whirler might have been used again with spindles and cases of the PUCEST system.

▼ The whirler in built up-condition ▼

