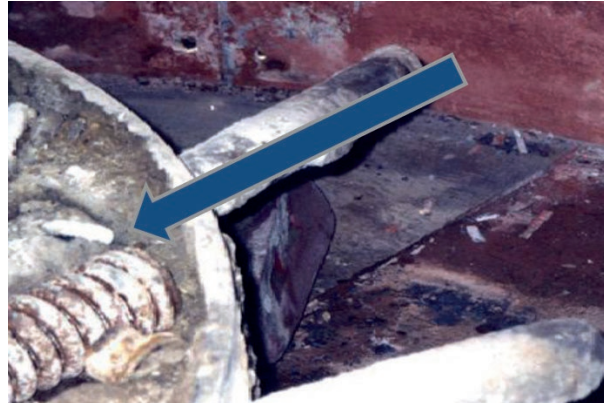


The PUCEST

# UNIVERSAL MIXING ARM



## EXISTING PROBLEMS



High speed pan mixers regardless of the kind of their origin are subject to the same “illnesses” due to the prolonged operating time.

Beginning with arm bearings and ending with a concreted rotor. It's a real holiday for every locksmith to renew such a rotor. It's clear that the

cost manager will be “happy” about the heavy bill and the production shutdown. To avoid this fear the PUCEST has developed a universal arm.

A mixing arm is suitable for every high speed pan mixer provided that its rotor is weldable. The installation is very simple.

## THE SOLUTION - THE PUCEST UNIVERSAL MIXING ARM



### Consisting of:

- Weld-on plate
- Console
- Bearing unit and clamping unit
- Mixing arm
- Blade

**the perfect  
SOLUTION**

## THE CONVERSION



Mixing arms, spring elements, control levers and other parts are removed from the removed. Arm open end holes are closed by a plate.



Adapter plates are welded. The console is fixed by four bolts as the spring unit. The arm and the mix blades are installed.

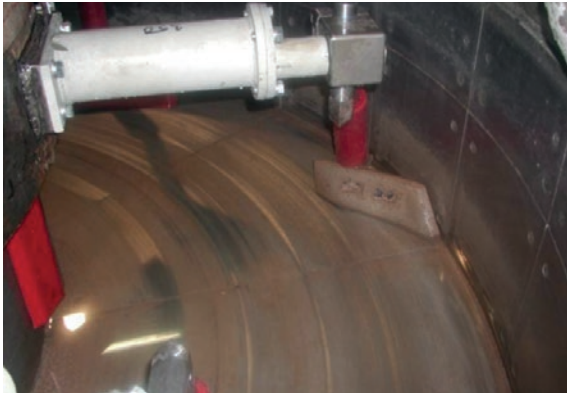


**A practically new mixer appeared shortly. The advantages over the old variant are convincing:**

No mixing arm bearings are getting through the concrete, and paralyzing the springs. No springs that can be broken. An arm which is turned in each direction and thereby can reach an optimal mix result.



In order to reach a faster emptying a clearing strip can be installed. For small parts it takes more than 15 minutes to be changed. Easy installation of the mixing arms and blades allows the system operator to perform this at the same time. Optimally installed mixing instruments mean less cleaning works and reduced wearing of blade and body.

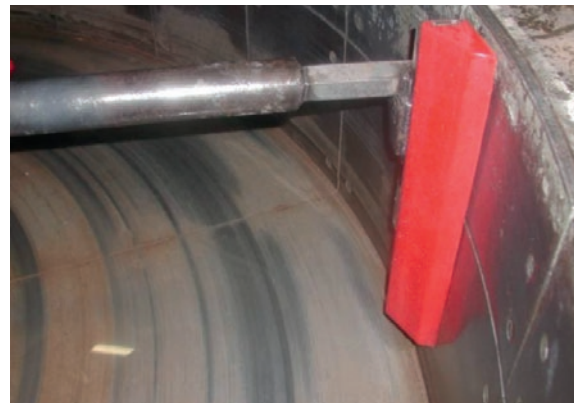


### PUCEST EXTERNAL SHOVEL

PUCEST universal arm with carbide metal composite blade for external area

### PUCEST EXTERNAL STRIPPER

PUCEST universal arm with PUCEST external stripper by PUCEST adjustable to all types



### PUCEST INTERNAL STRIPPER

PUCEST universal arm with tow arm und PUCEST blade

### PUCEST BOTTOM SCRAPER

PUCEST console arm PUCEST bottom scraper for a considerably faster emptying of the mixer and for a more homogeneous mix result

